



DROMEAS

SVIP E

Back coating

The back is available in 2 versions:

- a) Coated with cloth
- (b) Netted

Anatomic back

Anatomical frame made of shaped and welded steel profiles. A flexible fabric is attached to the frame on which a 10 mm thick foam is placed and is woven with fabric or leather of choice

S-shaped frame

The skeleton is made of a circular cross section, 26 mm in diameter and 2 mm thick, shaped in the shape of S. It allows the possibility of stacking one seat on the other

Arms

The arms are made of semi-rigid polyurethane black

Anti-slip soles

The Frame has anti-slip soles to protect the floor

Seat

The seat is made of solid 12 mm thick pressed wood plywood. On the seat is molded polyurethane molded with a fabric of choice

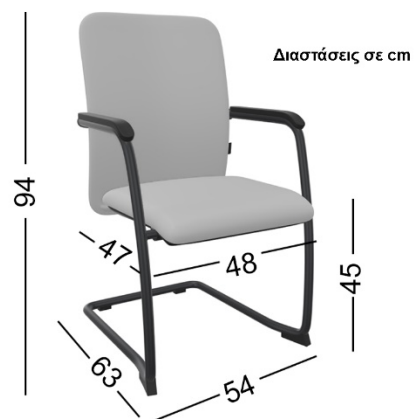


Anatomic back support:



Anatomical design of the seat according to ergonomic standards EN 1335.

Dimensions:
Weight: 10kg

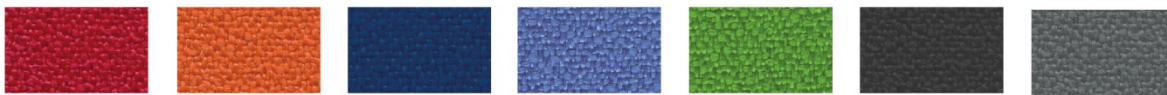


Color chart:

Certificates:

DIN EN 16319:2013
EN 13761:2002
RAL-UZ 117

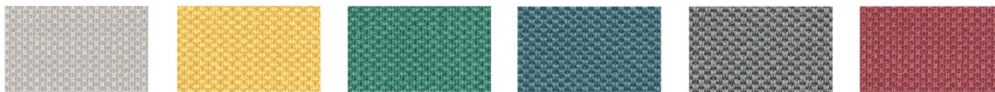
■ ΤΥΠΟΣ 1 | TYPE 1



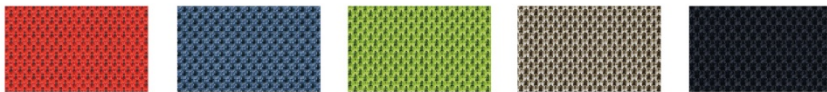
■ ΤΥΠΟΣ 2 | TYPE 2



■ ΤΥΠΟΣ 3 | TYPE 3



■ ΤΥΠΟΣ 5 | TYPE 5



■ ΔΕΡΜΑΤΙΝΗ | ARTIFICIAL LEATHER



■ ΔΕΡΜΑ | LEATHER



■ ΔΙΧΤΥ | NET

