



DROMEAS

SMART-D

Headrest

The seat can have a height-adjustable headrest.

Back upholstery

The back has a built-in lumbar support which is adjustable in height by 70mm.

Adjustable back

From anatomical frame made of shaped and welded steel profiles. A rubber cloth is fitted to the frame on which polyurethane foam or net is placed so that the pressure is evenly distributed.

Sliding surface

Ergonomically designed sliding seat. Possibility of stabilization in 7 positions. Made of thermoplastic polyamide with cast polyurethane foam cushion

Adjustable armrests

Made of thermoplastic polyamide with height adjustment (70mm). In addition, they have a width adjustment, which is estimated at 395-450mm. The contact surface of the arms is made of molded polyurethane of medium hardness for greater comfort and ergonomics. It can be rotated $\pm 15^\circ$ and can be moved back and forth in 6 positions

Synchro mechanism

With the possibility of stabilization in 5 positions, anti-panic system and adjustment to the user's weight through a tilt adjustment rotor. Allows synchronous tilt of the seat by 11° and the backrest by 22°

Base

Five-star base 660mm, made of die-cast aluminum electrostatically painted or polished

Twin wheels / Anti-slip soles

The wheels are twin made of reinforced thermoplastic material (polyamide). Fixed soles are optionally placed instead of the wheels



<https://www.dromeas.gr/>

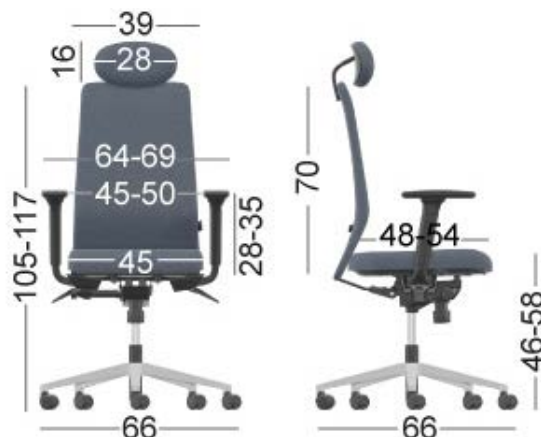
Anatomical back support:



The Smart-D chair offers synchronized seat-back movement and lumbar support. It allows the user to lock the seat in a specific position and properly supports the trunk by adjusting a rotor located on the back of the back. The chair arms can be rotated and adjusted in height and width.

Dimensions:

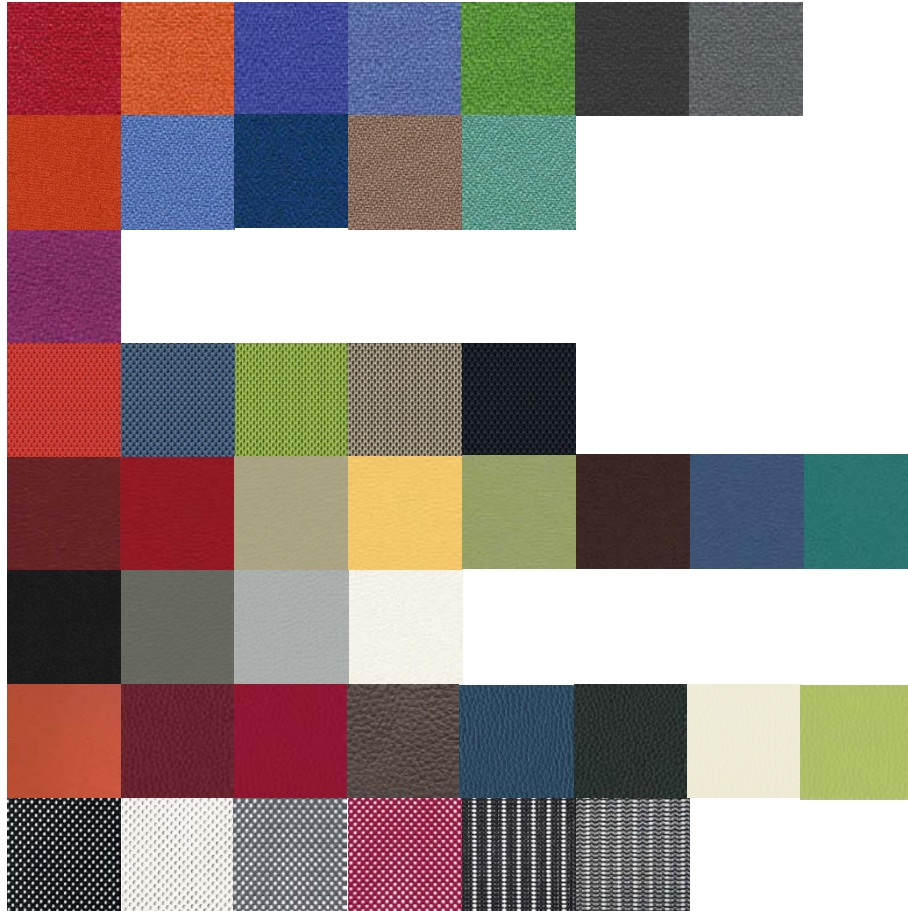
Weight: 19.5 kg





DROMEAS

Color chart:



Certificates:

EN 1335-1:2000
EN 1335/AC:2002
EN 1335-2:2009
EN 1335-3:2009
DIN 4550 / 12.04



<https://www.dromeas.gr/>