



DROMEAS

SMART

Adjustable backrest

Anatomical frame made of shaped and welded steel profiles. The frame is fitted with a flexible fabric on which foamed polyurethane or net is placed to distribute the pressure uniformly.

Backrest Upholstery

The back is available in 3 versions: large, medium and mesh. It has built-in lumbar support that adjusts to a height of 70mm

Adjustable arms

Thermoplastic polyamide with height adjustment (70mm). They also have a width adjustment of 395-450mm. The contact surface of the arms is made of molded polyurethane of medium hardness for greater comfort and ergonomics. It can be rotated $\pm 15^\circ$ and can be moved back and forth in 6 positions

Sliding seat

Ergonomically designed sliding seat. Possibility of stabilization in 7 positions. Made of thermoplastic polyamide with cast foam polyurethane pad

Synchro mechanism

5-position stabilization, anti-panic system and adjustment to user weight via tilting impeller. Allows synchronous tilt of the seat by 11° and the back support by 22°

Base

5-star 660mm, die-cast aluminum painted with electrostatic paint or polished

Twin wheels / Anti-slip feet

The wheels are twin reinforced thermoplastic material (polyamide). Optional wheels are fitted with fixed feet

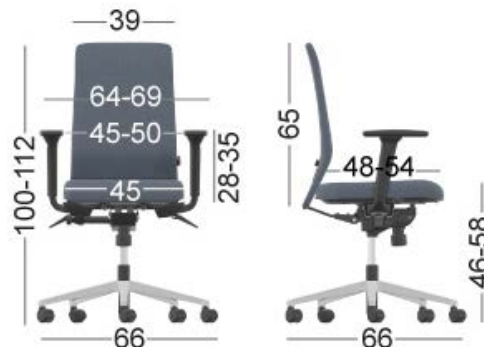


Anatomical back support:

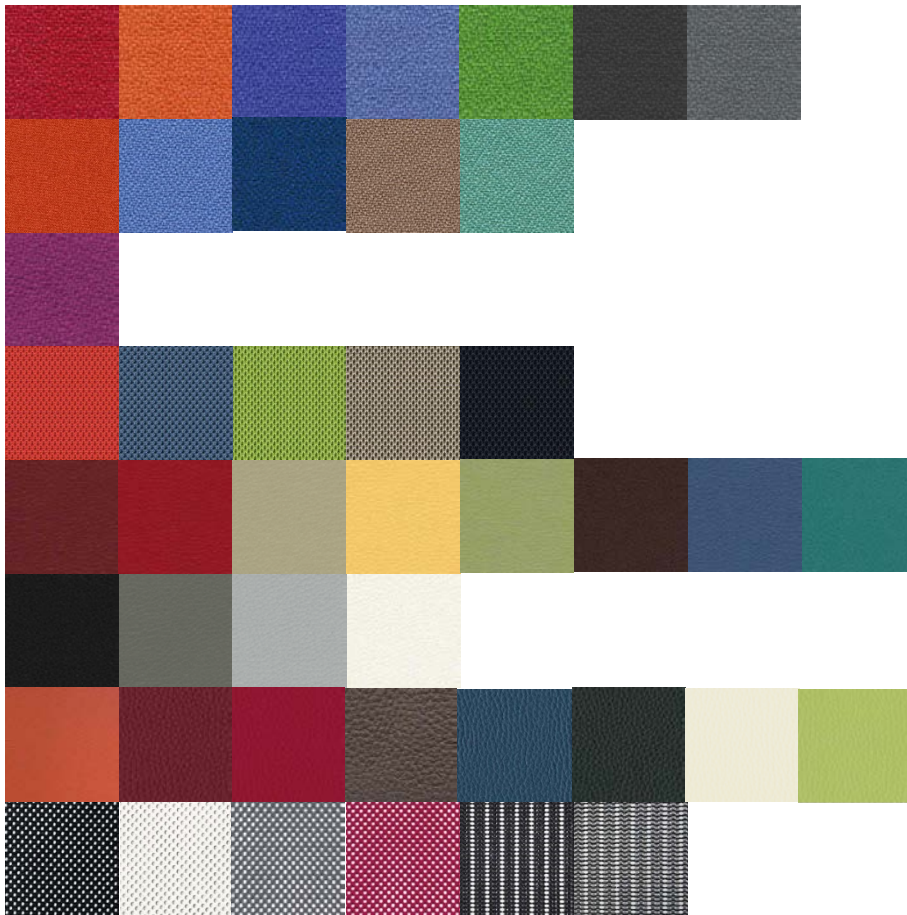


The Smart chair has an anatomical back design according to the EN1335 ergonomics standards. It has a sliding seat and offers synchronized seat-back movement for relaxing work. In addition, it supports the back properly with a built-in support mechanism. The mechanism has an "anti-panic" system and an adjustment system for balanced reclining depending on the weight of the user. Turning the tilt on and off is achieved via the same lever used to adjust the seat height. The adjustment of the recoil force is achieved through a rotor located at the bottom and in the center of the mechanism. The back has a built-in lumbar support which is adjustable in height by 70mm. The seat arms can be rotated and adjusted in height and width.

Dimensions:
Weight: 18.5 kg



Color chart:



Certificates:

EN 1335-1:00
 EN 1335-1/AC:02
 EN 1335-2:09
 EN 1335-3:09
 DIN 4550 / 12.04
 DE-UZ 117

